

# MaxLink PR29E

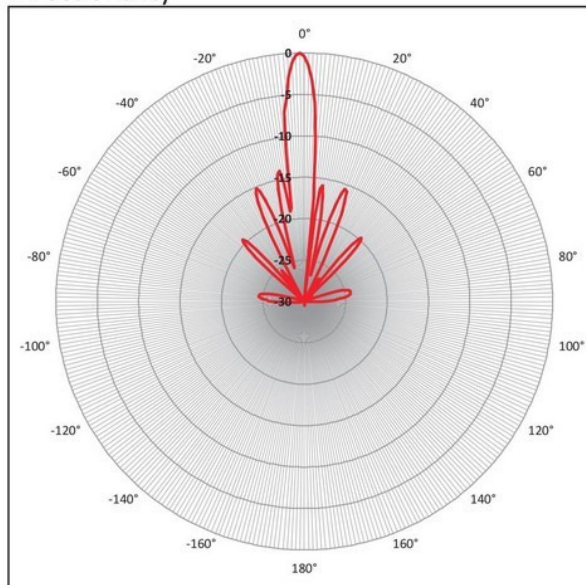
## Parabolic antenna

Gain	29dBi
B to F ratio	>30db
Directivity	6°
SWR	<1,5
Diameter	595mm
Weight	1,95kg
Frequency	5,3- 5,8GHz
Polarization	horizontal/vertival
Impedance	50Ω
Connector	N female
Pole diameter	28-66mm
Optional kit	Radom included



### Diagrams

Directionality



SWR

